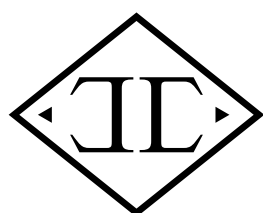




A K I L L I S

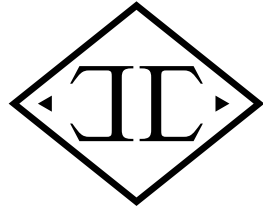


JOAILLERIE PARIS

PYTHON COLLECTION



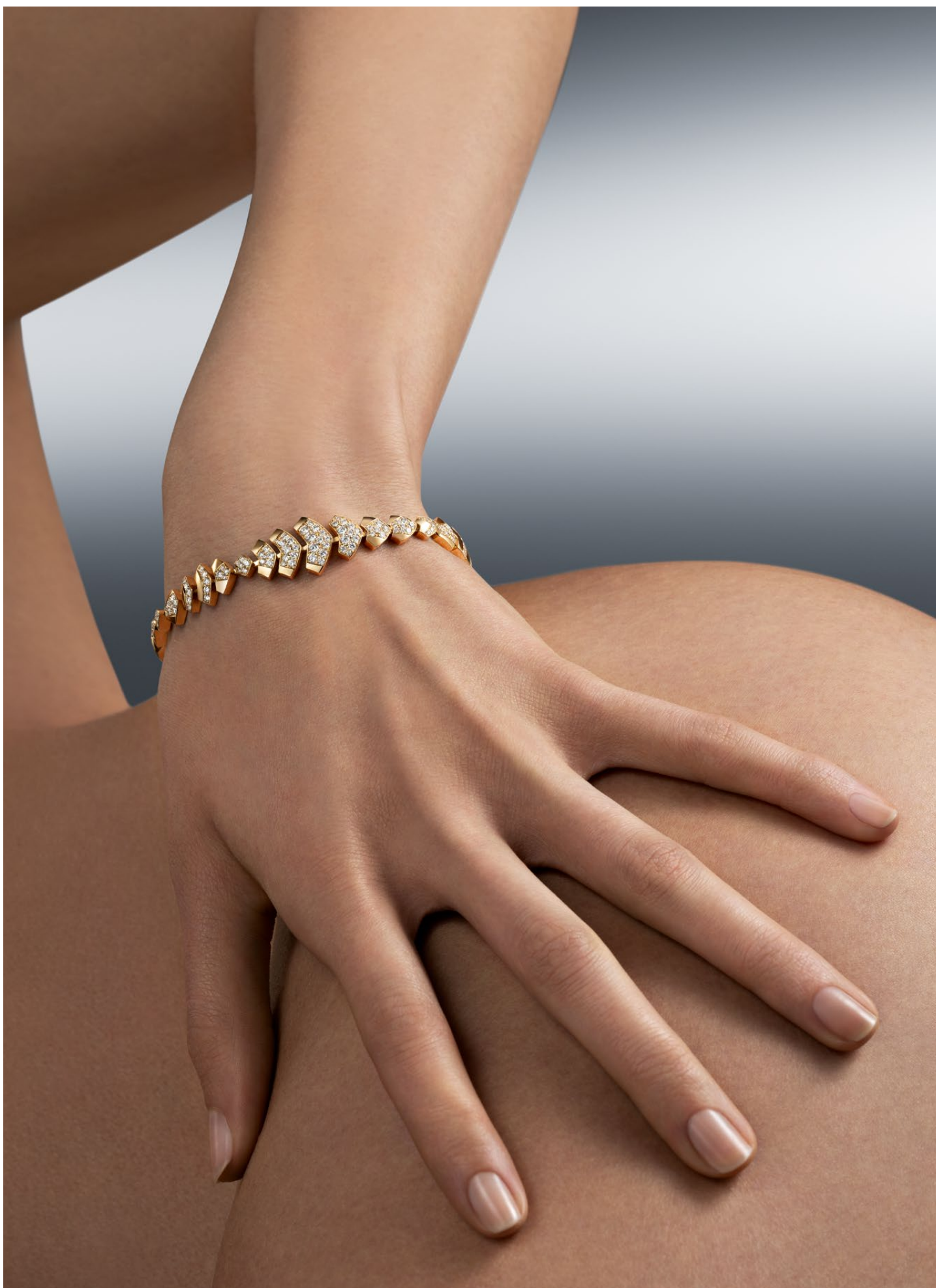
# A K I L L I S



JOAILLERIE PARIS

## THE PYTHON COLLECTION SHEDS ITS SKIN

INSPIRED BY THE CAPTIVATING MYTH OF THE SERPENT, EACH PIECE EMBRACES THE BODY LIKE A SECOND SKIN. A SHEDDING, A RENEWAL, A PERPETUAL METAMORPHOSIS LEADING TO SENSUAL PERFECTION.



**AN ANCESTRAL SYMBOL OF REBIRTH AND WISDOM, THE SERPENT REPRESENTED PROTECTION AND INNER AWAKENING IN ANCIENT TIMES.**

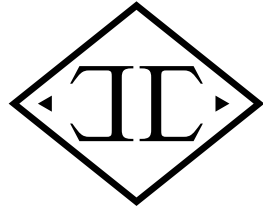
REFLECTING THIS ESSENCE, THE PIECES IN THE PYTHON COLLECTION ENTWINE, REVEAL, AND TRANSFORM, EMPOWERING THOSE WHO WEAR THEM WITH THE STRENGTH TO MASTER THEIR DESTINY.



PYTHON BRACELET  
18K YELLOW GOLD  
G-VS DIAMONDS



# A K I L L I S



JOAILLERIE PARIS

**ITS ARTICULATION ENHANCES MOVEMENT, REVEALING ONLY THE ESSENTIAL MOTIF: THE SCALE.** A DEMONSTRATION OF EXCEPTIONAL CRAFTSMANSHIP, WHERE GOLD AND DIAMONDS ELEGANTLY PUNCTUATE EACH CREATION. HERE, NOTHING IS ENGRAVED—THE METAL IS SCULPTED, SHAPED, AND DESIGNED TO CAPTIVATE THE IMAGINATION AND SEDUCE WITH ITS BEAUTY.

CRAFTED FROM PRECIOUS MATERIALS, EACH PIECE IS A MASTERPIECE OF FINE JEWELRY. THE EXPERT JEWELERS AT AKILLIS, MASTERS IN PRECISION AND DETAIL, METICULOUSLY TRANSFORM THESE NOBLE MATERIALS INTO UNIQUE CREATIONS.

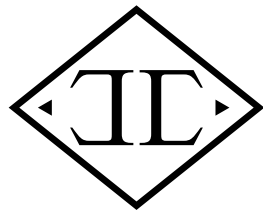


PYTHON BRACELET  
18K WHITE GOLD  
G-VS DIAMONDS





# A K I L L I S



JOAILLERIE PARIS



PYTHON EARRING  
18K YELLOW GOLD, G-VS DIAMONDS  
SOLD PER UNIT

**THIS COLLECTION REINVENTS TRADITIONAL JEWELRY CODES WITH A GRAPHIC DESIGN AND CRAFTSMANSHIP THAT SEAMLESSLY BLEND HERITAGE AND CUTTING-EDGE TECHNOLOGY.**

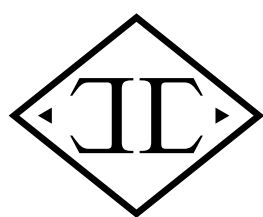
AMONG THE STANDOUT PIECES, ONE DISCOVERS GOLD OR TITANIUM BRACELETS SET WITH SPARKLING DIAMONDS, A NECKLACE WITH INTRICATELY INTERWOVEN MOTIFS SYMBOLIZING STRENGTH AND PROTECTION, THOSE DELICATE AND SUBTLE EARRINGS ARE PERFECT FOR ADDING A TOUCH OF ELEGANCE.

THE EXCEPTIONAL SAVOIR-FAIRE OF AKILLIS ARTISANS IS REFLECTED IN EVERY DETAIL OF THE PYTHON COLLECTION. TRADITIONAL JEWELRY-MAKING TECHNIQUES ARE ELEVATED BY A CONTEMPORARY VISION, RESULTING IN DESIGNS THAT PUSH THE BOUNDARIES OF BOTH CRAFTSMANSHIP AND CREATIVITY. EACH PIECE IS THE CULMINATION OF COUNTLESS HOURS OF METICULOUS WORK, COMBINING EXPERTISE AND PASSION TO CREATE JEWELRY OF UNPARALLELED QUALITY AND SOPHISTICATION.





# AKILLIS



JOAILLERIE PARIS

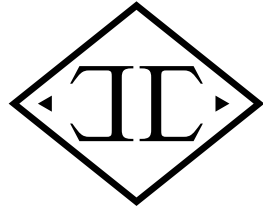


**WITH THIS NEW COLLECTION, AKILLIS REAFFIRMS ITS COMMITMENT TO INNOVATION IN FINE JEWELRY.**

THE PYTHON COLLECTION, WITH ITS BOLD DESIGN AND EXCEPTIONAL MATERIALS, PERFECTLY EMBODIES THE SPIRIT OF RENEWAL AND DYNAMISM THAT DEFINES THE MAISON.



# A K I L L I S



JOAILLERIE PARIS

IN OUR WORKSHOPS, MASTERFUL CRAFTSMANSHIP GIVES RISE TO SCULPTURAL CREATIONS OF ABSOLUTE PRECISION. AMONG THEM, TWO PIECES EXCLUSIVELY DEDICATED TO HIGH JEWELRY EMBODY THIS COMMITMENT TO EXCELLENCE.

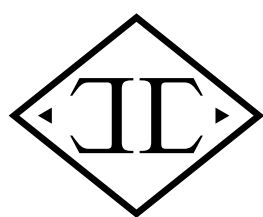


**THE PLASTRON NECKLACE, A ONE-OF-A-KIND PIECE OF UNMATCHED PRESENCE, WAS CAST IN OUR WORKSHOP.** CRAFTED IN 18-CARAT YELLOW GOLD AND SET WITH GVS DIAMONDS, IT REQUIRED NO LESS THAN 105 HOURS OF WORK—FROM DESIGN AND CASTING TO STONE SETTING.

**THE CUFF BRACELET, EQUALLY EXCLUSIVE, COMBINES STRENGTH AND REFINEMENT.** ALSO MADE OF 18-CARAT YELLOW GOLD AND GVS DIAMONDS, IT DEMANDED 80 HOURS OF METICULOUS WORK TO ACHIEVE PERFECTION.



# AKILLIS



JOAILLERIE PARIS



JEWELRY AND HIGH JEWELRY TO DISCOVER IN APRIL 2025